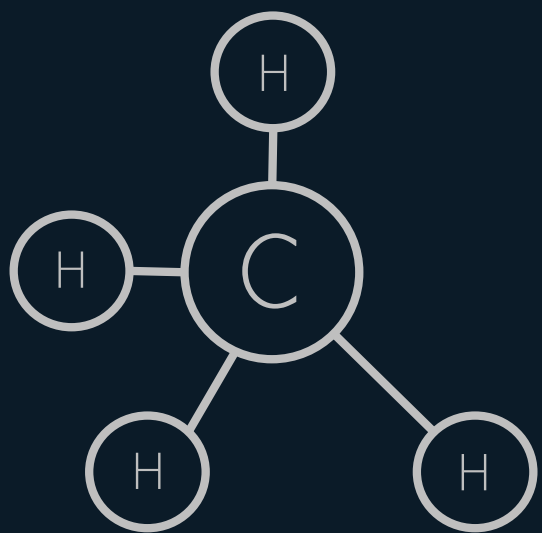
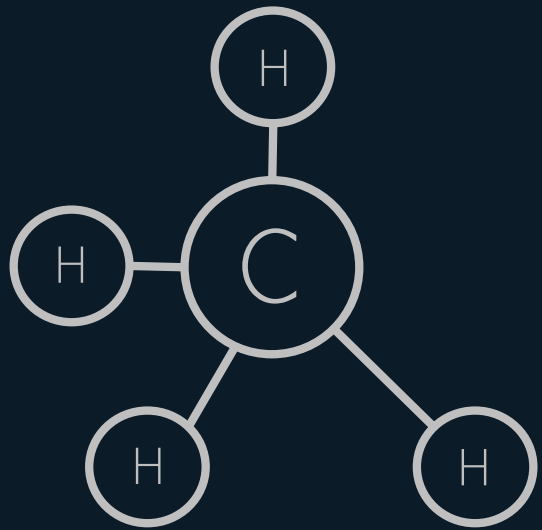


# A new space approach to monitoring greenhouse gases

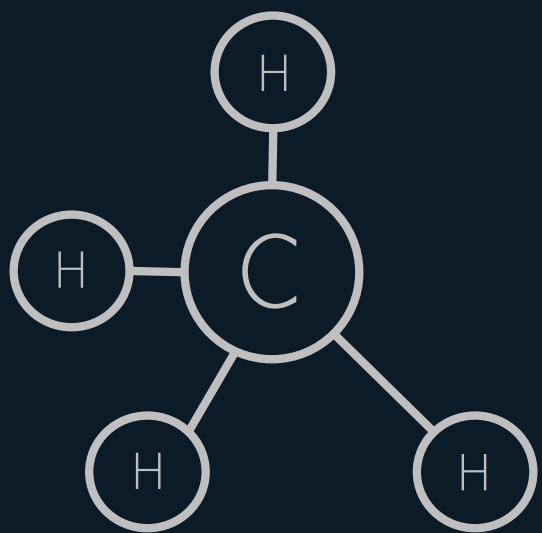




Mitigation matters.



Methane accidents represent hazards for oil & gas.

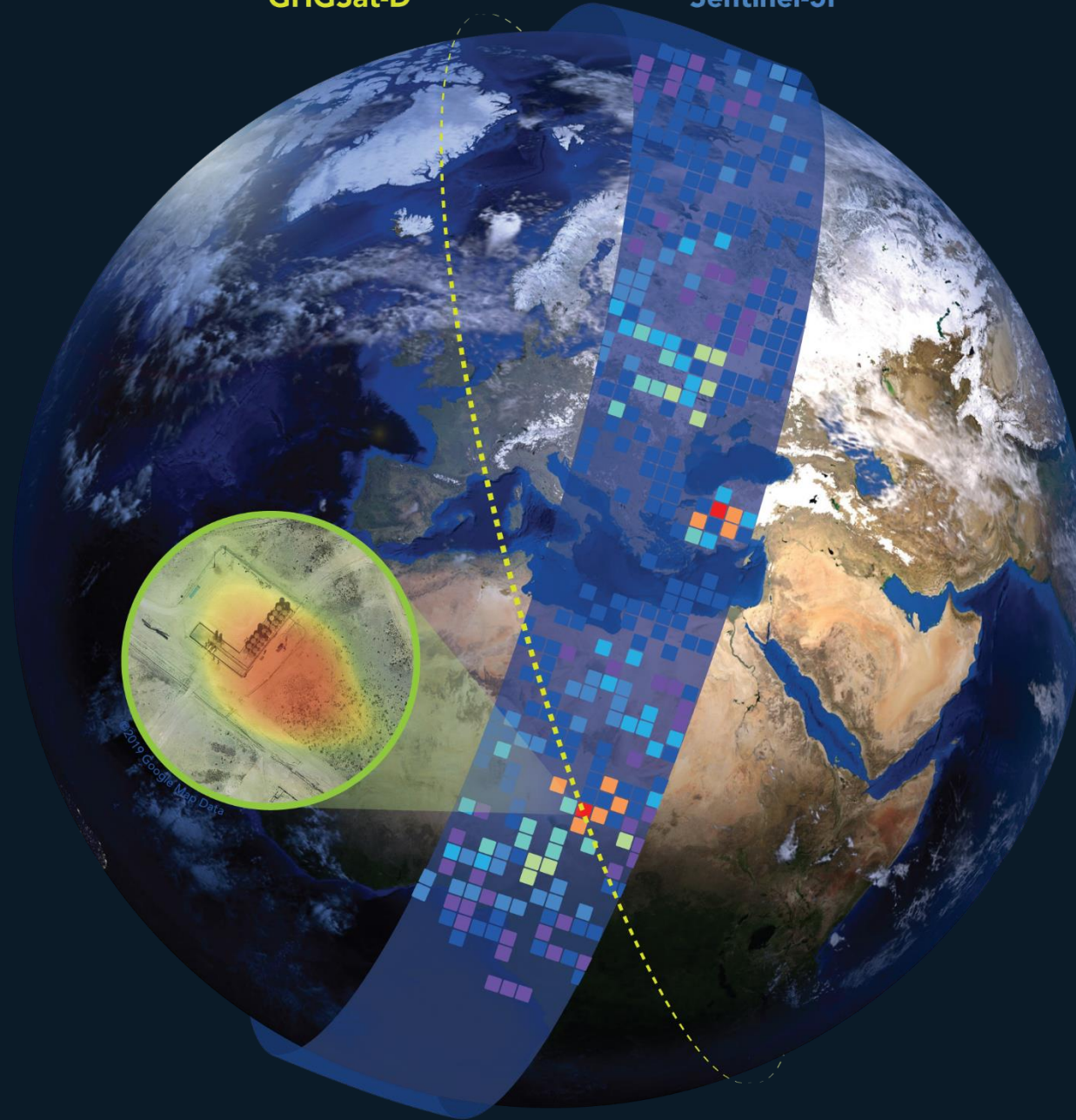


Methane has value.



GHGSat-D

Sentinel-5P



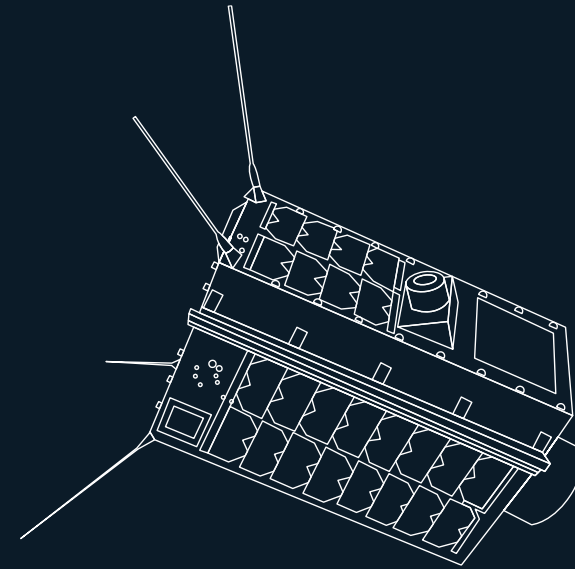
Low-cost microsatellites

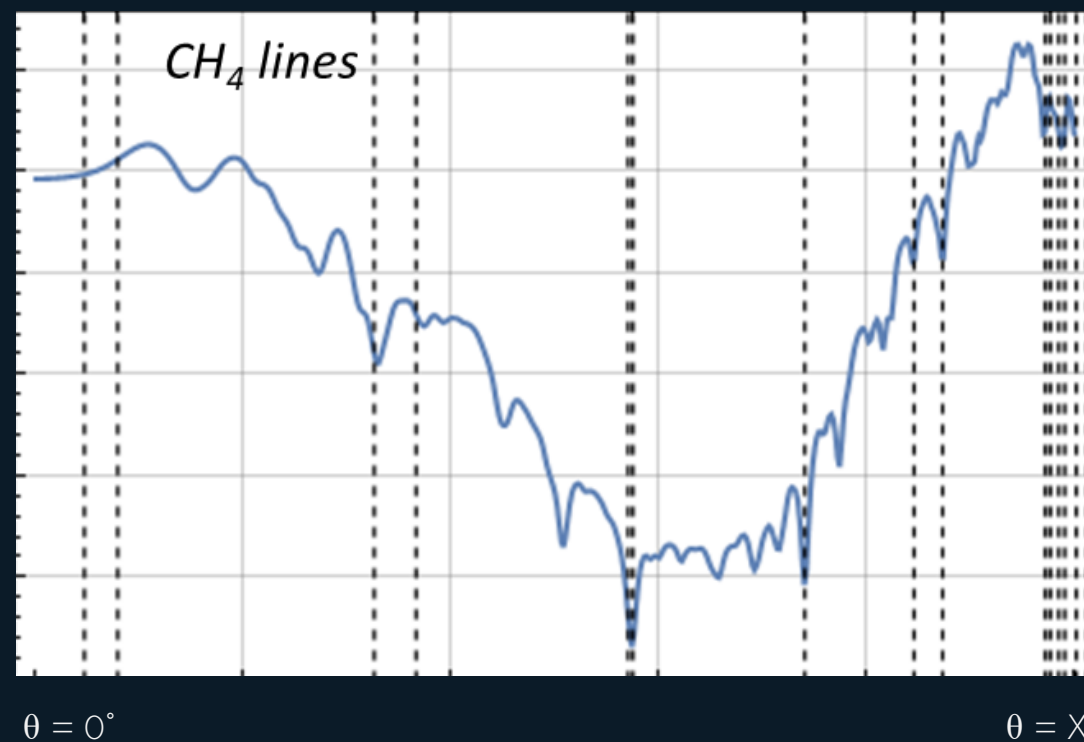
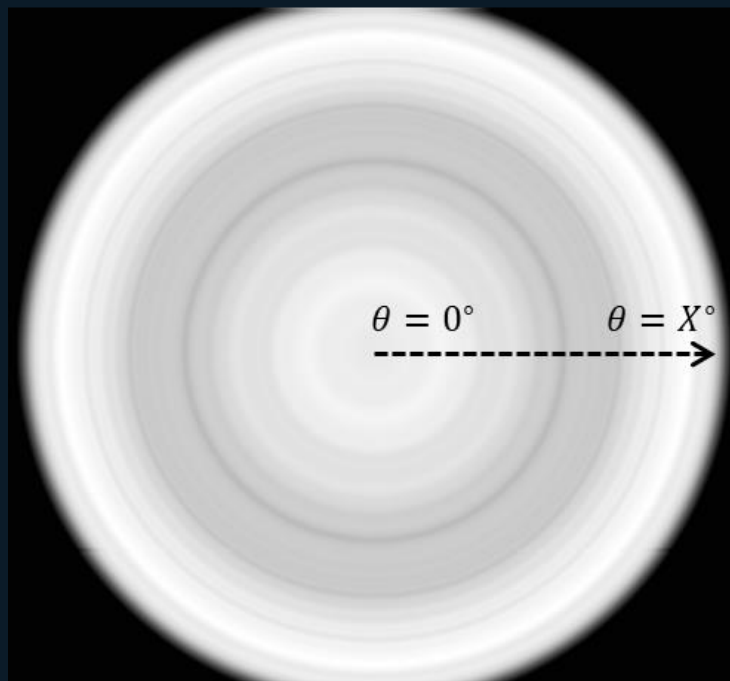
~500km Sun Synchronous Orbit

SWIR instrument

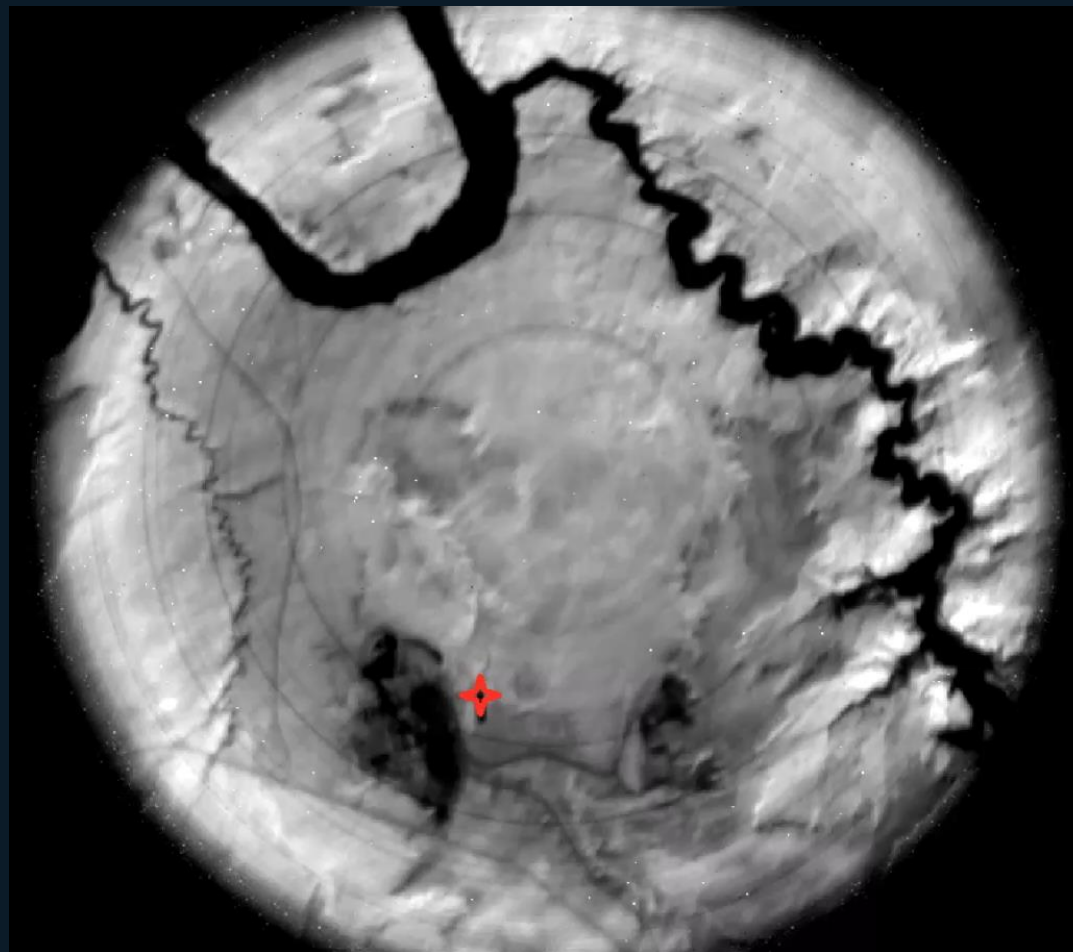
25m spatial resolution

12km x 12km “scene”

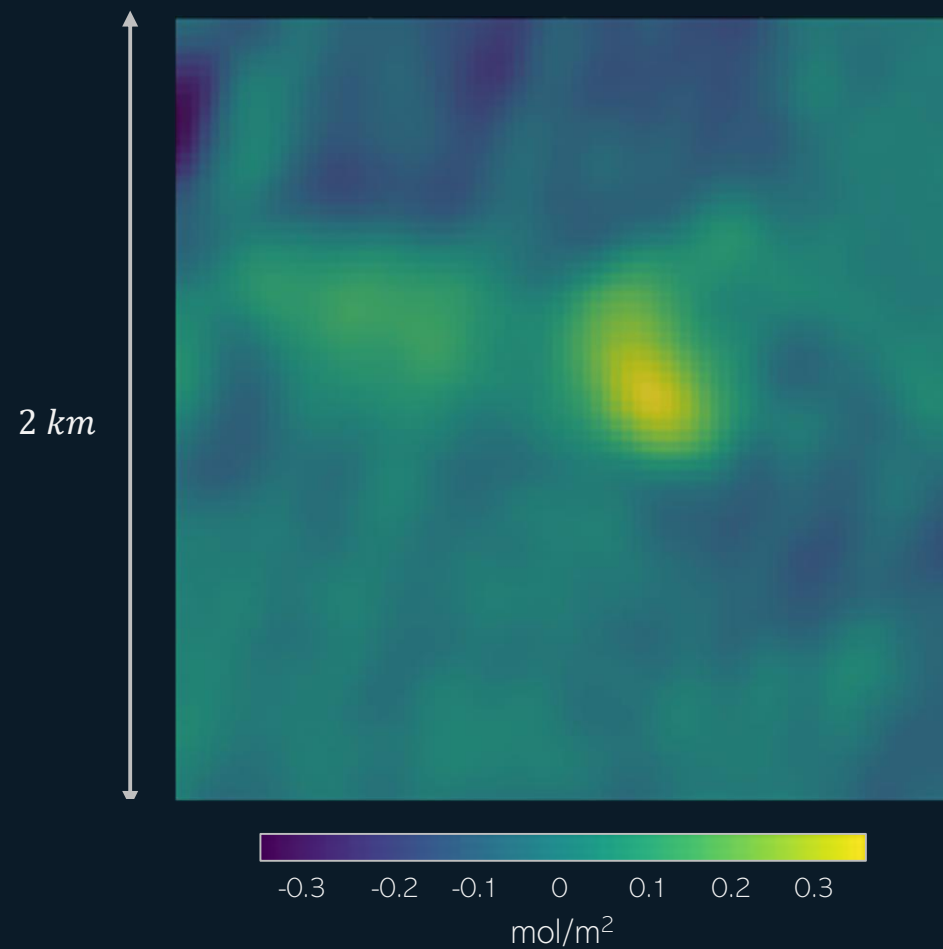






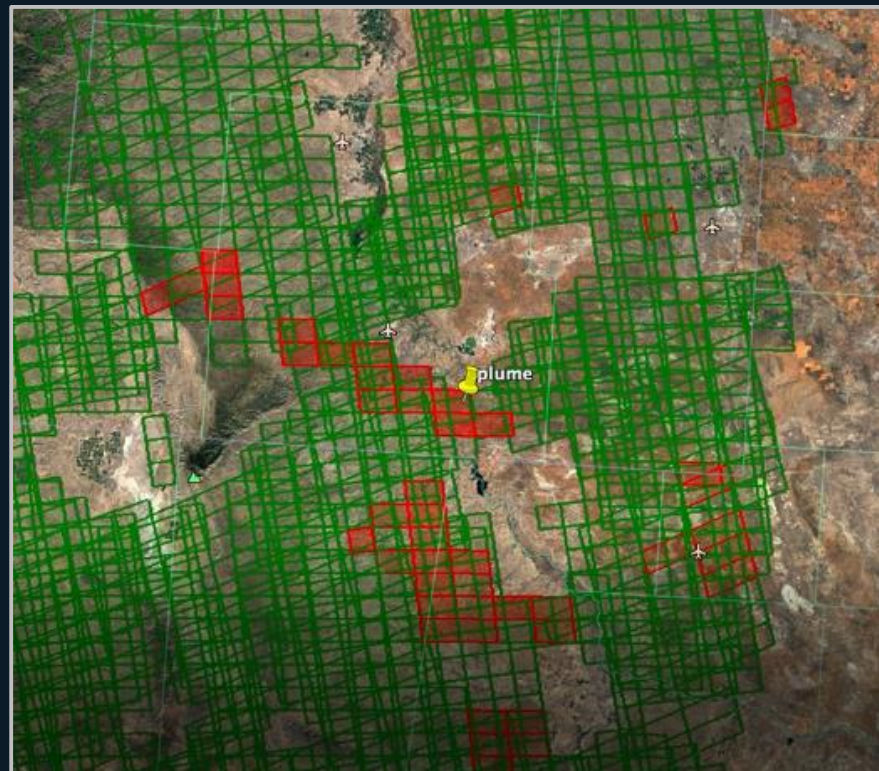





## Methane Enhancement



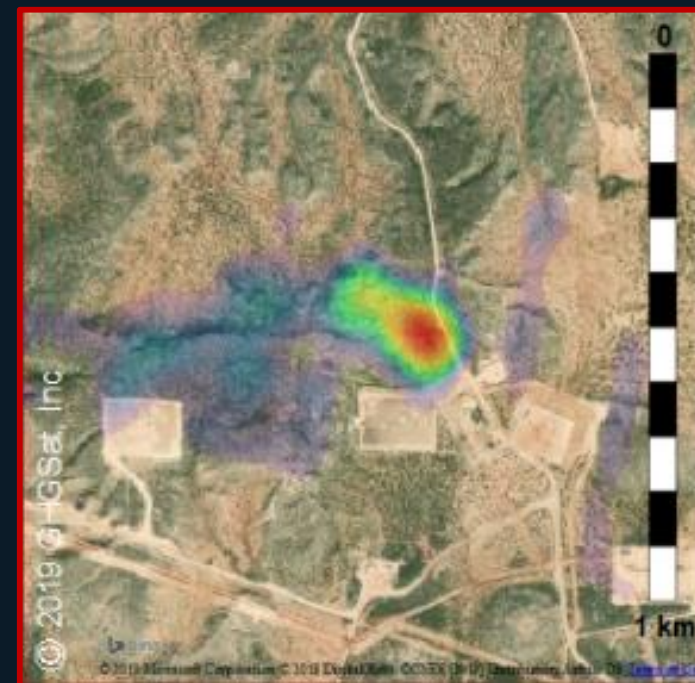
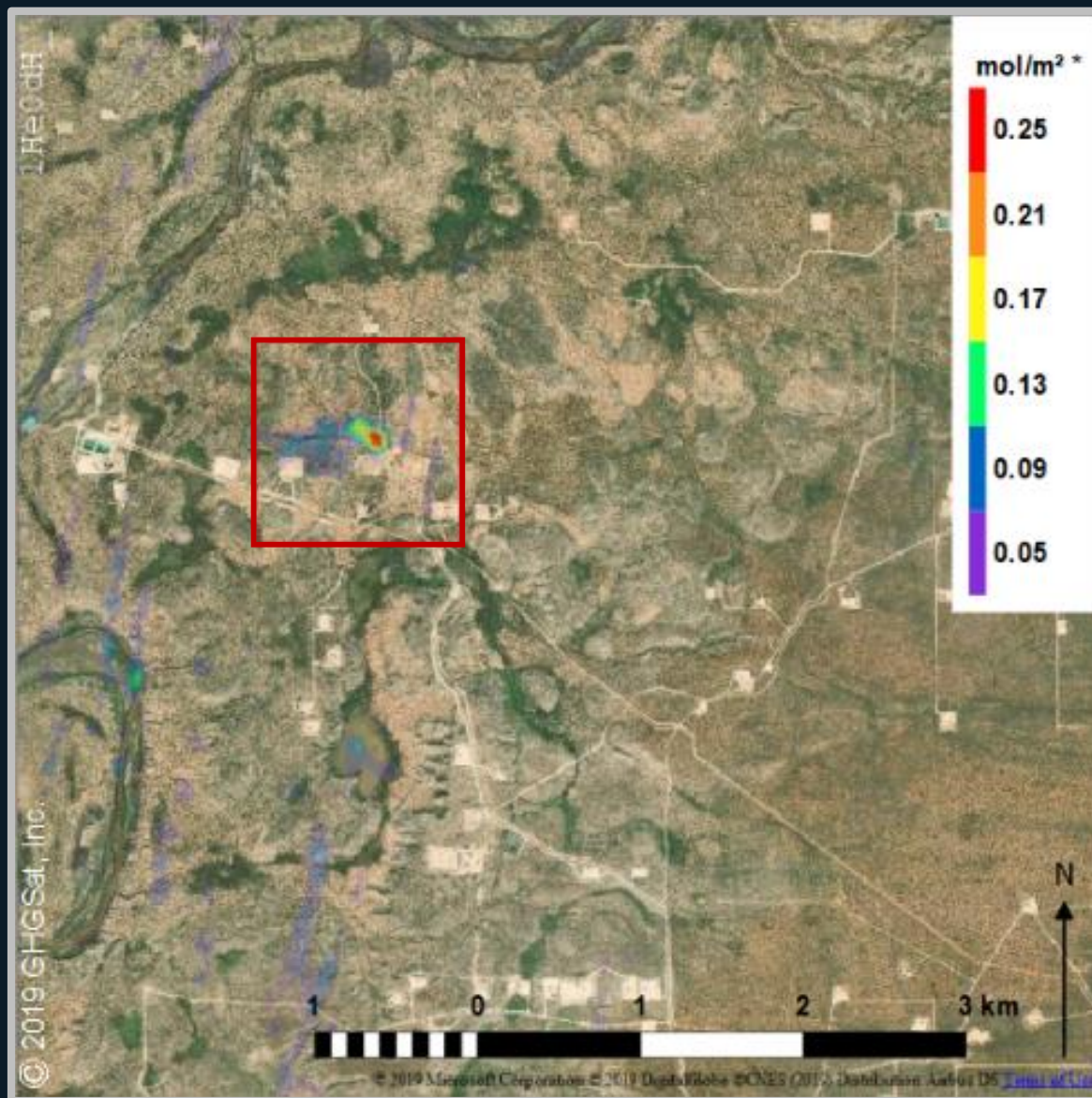
Impact,

the Delaware Basin, USA...

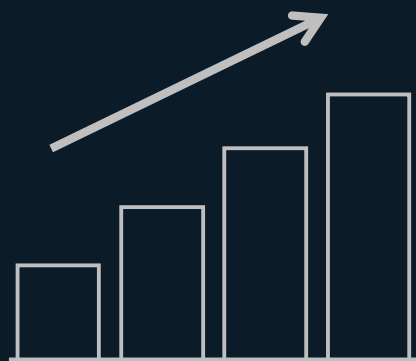


-  No hotspot (using TROPOMI Level 2)
-  Hotspot (using TROPOMI Level 2)
-  Emission Predictor hotspot (using all input data)





\* Excess vertical column density  
Background image © Bing Imagery



The market...



# Oil & Gas





An aerial photograph showing a large herd of cattle, primarily brown and some white, grazing in a lush green field. A dark, straight line, likely a fence or a path, runs diagonally across the left side of the image. The cattle are densely packed in some areas and more spread out in others. Long shadows are cast by the animals, indicating a low sun position. The overall scene depicts a typical agricultural landscape.

# Agriculture





# Waste Management





Mining





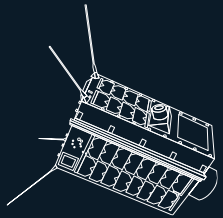
Power Generation





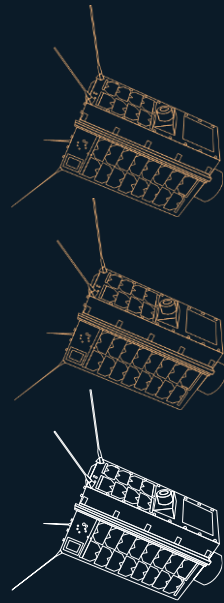
Market relevant solutions require analytics  
underpinned by good science,  
and data...

Demo & lessons  
learned



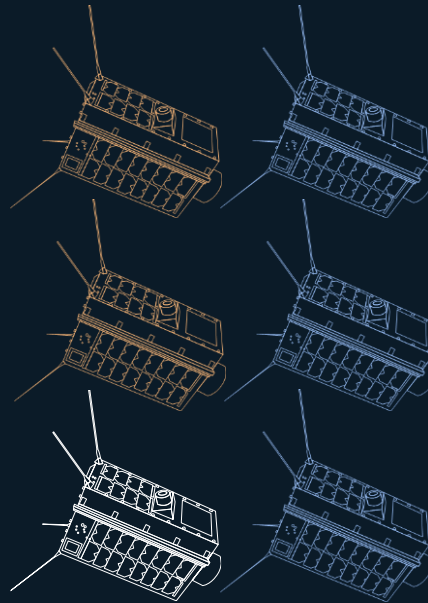
2016

Commercialization



2020

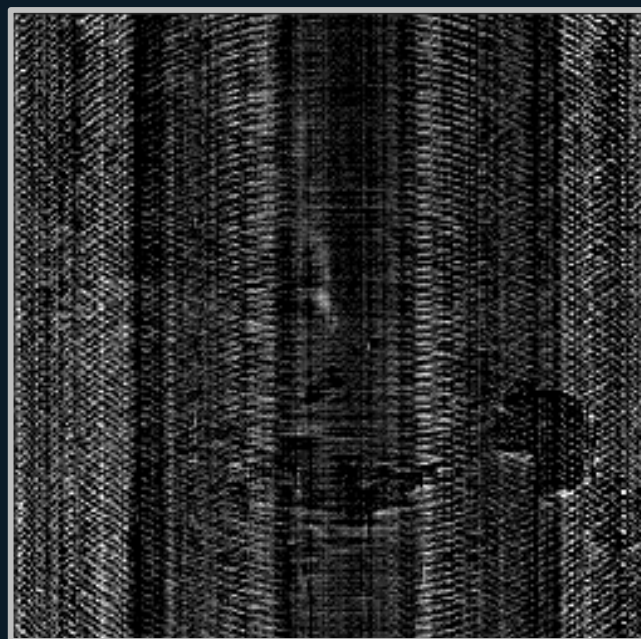
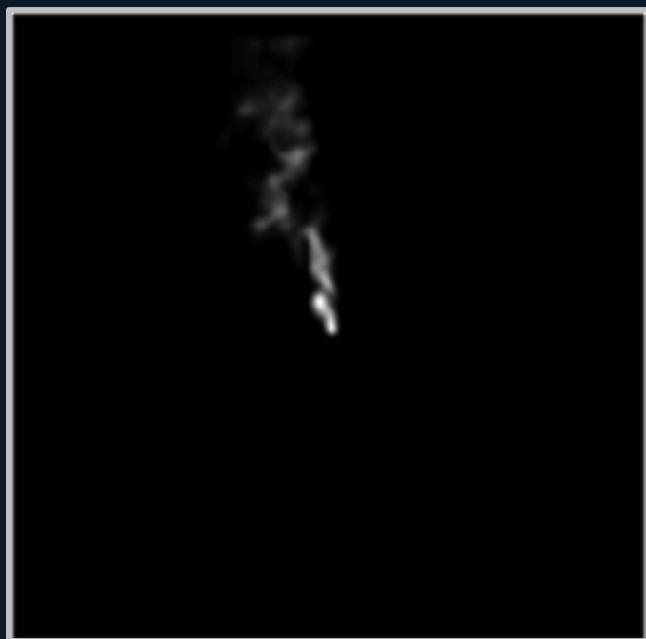
Scale-Up



2021



2022



# Iris for CSA & ESA

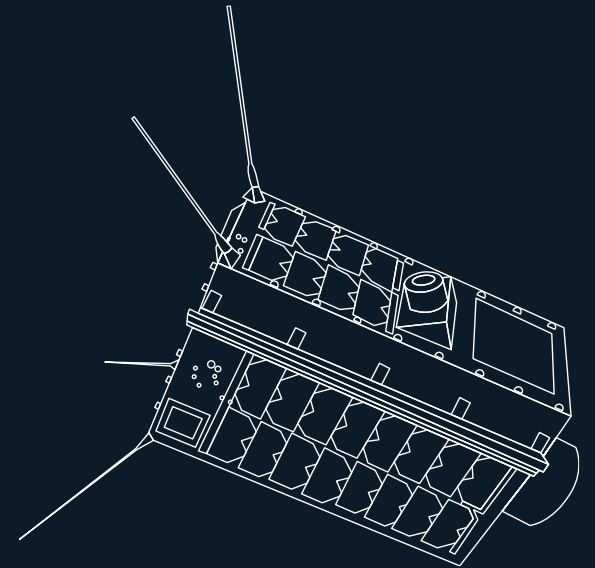


5% of Iris (GHGSat-C1) data  
will be provided for free to...

Develop new science & applications using GHGSat data

Encourage researchers to evaluate the complementarity of ESA, CSA & GHGSat missions

Prepare for future greenhouse gasses missions (e.g. CO2M, AIM-North)





# Introducing Hugo



**CLAIRE**

GHGSat-D



**HUGO**

GHGSat-C2



**IRIS**

GHGSat-C1

